



Welcome

TOWN HALL: CAMPBELL HALL RENOVATION

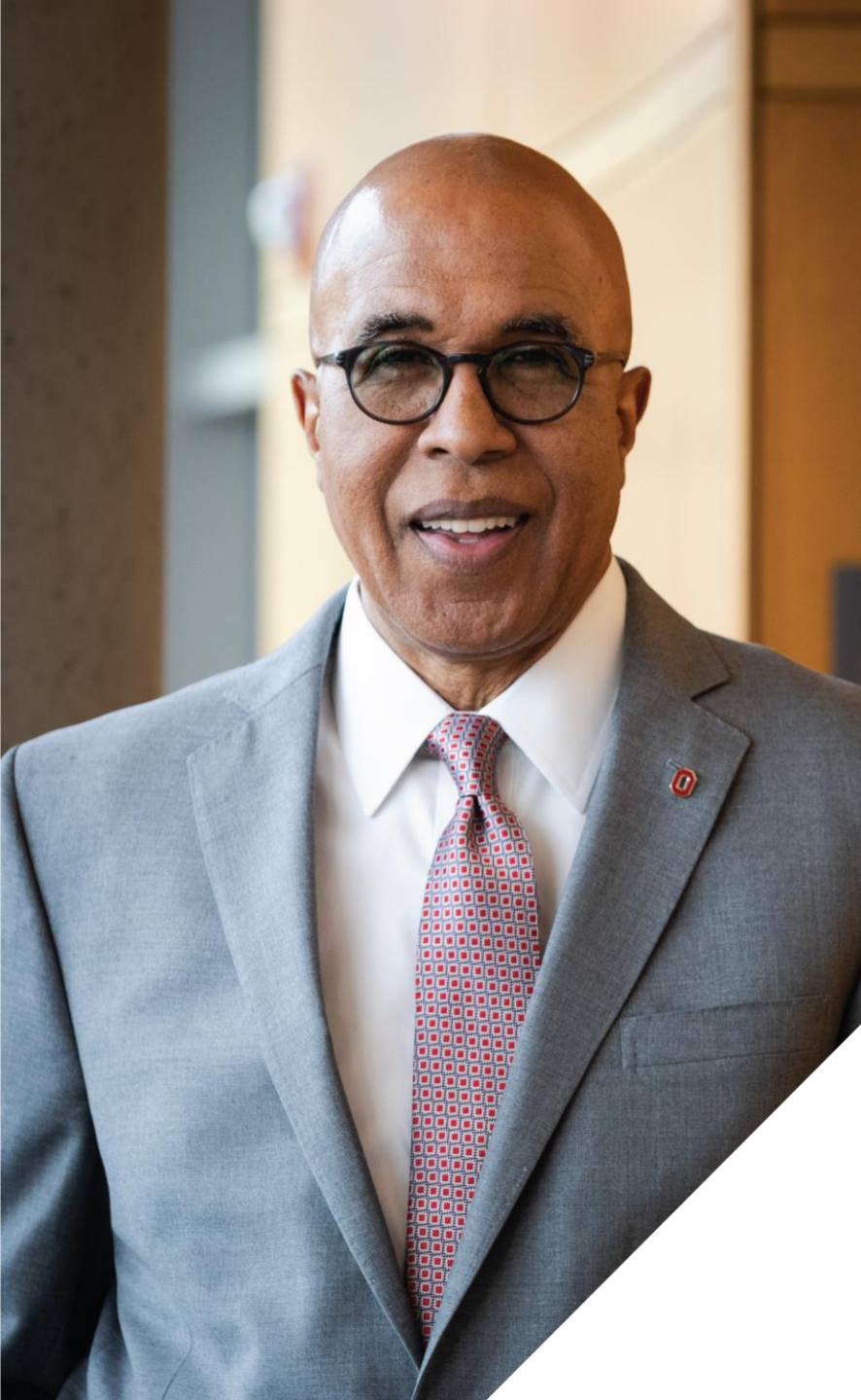
REINFORCING PROMISE
AND OPPORTUNITY

SEPTEMBER 27, 2022



THE OHIO STATE UNIVERSITY

COLLEGE OF EDUCATION
AND HUMAN ECOLOGY



Dean Don Pope-Davis

- WELCOME AND OVERVIEW



THE OHIO STATE UNIVERSITY

COLLEGE OF EDUCATION
AND HUMAN ECOLOGY

CAMPBELL HALL RENOVATION



Kelly Robinson Crawford

- BUDGET BREAKDOWN
- TIMELINE
- MOVE OUT AND SWING SPACE



THE OHIO STATE UNIVERSITY

COLLEGE OF EDUCATION
AND HUMAN ECOLOGY

CAMPBELL HALL RENOVATION

Budget

DESCRIPTION	TOTAL
LOCAL CASH	\$15,000,000
STATE APPROPRIATION	\$43,760,000
FUNDRAISING	\$1,240,000
UNIVERSITY FUNDING	\$1,226,500
TOTAL FUNDING	\$61,226,500
TOTAL PROJECT COST	\$61,226,500

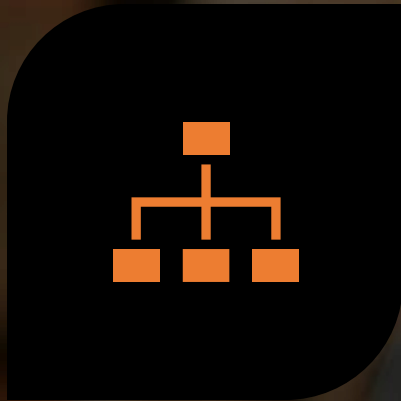


THE OHIO STATE UNIVERSITY

COLLEGE OF EDUCATION
AND HUMAN ECOLOGY

CAMPBELL HALL RENOVATION

Project Timeline – Design Phase



SCHEMATIC DESIGN



DESIGN DEVELOPMENT



*CONSTRUCTION
DOCUMENTS*



Project Timeline – Design Phase

- Important Elements of the Design Phase
 - Pricing the project
 - Guaranteed Maximum Price (GMP)
 - Approvals
 - Design Review Board
 - University Board of Trustees
 - State Controlling Board

Swing Space

- **Evans Lab** - Wet Labs and Research Kitchen
- **Ramseyer Hall** - Dry Labs and other research space
- **Off-Campus** - Historic Costume Collection
- **Ramseyer Hall** - Office space
Space is limited, working directly with program chairs to address assignment of space





Move Out

- Key Dates
 - December 31
 - March 31
 - May 26
- Majority of faculty and staff will work from home
- No classes will be held in Campbell Hall Spring Semester 2023
- Labs will be moved at the conclusion of finals week



Current Projected Dates

MAY 30

TURN OVER CAMPBELL HALL FOR
DEMOLITION AND ABATEMENT

SEPTEMBER 1

CONSTRUCTION BEGINS

SPRING 2024

PROJECTED OCCUPANCY (18 MONTHS
TO COMPLETION)



THE OHIO STATE UNIVERSITY

COLLEGE OF EDUCATION
AND HUMAN ECOLOGY

CAMPBELL HALL RENOVATION



Keoni Fleming

- SCHEMATIC DESIGN
- FEATURES OF THE SPACE



THE OHIO STATE UNIVERSITY

COLLEGE OF EDUCATION
AND HUMAN ECOLOGY

CAMPBELL HALL RENOVATION

es ne
ed or
t-to
as ly
th
ed es
ve us
ll, ry
r-ft
s-or
e-
y
r-

Gives Color Talk



Color blindness expert, Dr. W. D. Wright, of London, England will speak at an open lecture at 8 p. m. in Campbell Hall auditorium today. His topic will be "Recent Developments in the Field of Color Vision."



This student is studying on the steps of Campbell Hall.



Photo by [unreadable]



colleg
ecology
144 ACADEMICS



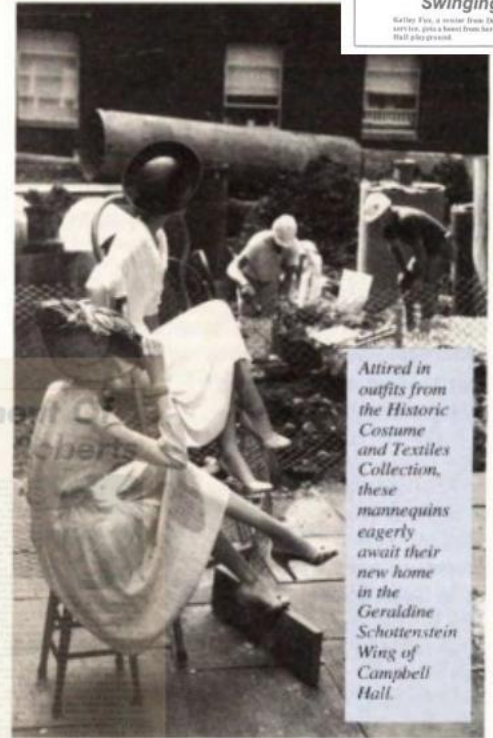
Campbell Hall from across the street

Fashion

The College of Human Ecology showcased its historic costume collection this year with the creation of the exhibit "Fashion American Style: 1900-1999." Located in Campbell Hall, the display ran from the end of October through mid-May. It was a showcase of 20th century fashion, focusing on American's contribution to design.

Gayle Stegert, curator of the Historic Costume and Textiles Collection, created the display. The collection included dresses from each decade of the 20th century, and highlights the direction style and fashion.

"It is the beginning of a new century, so the purpose is to show the most important State University. The collection is the first in the search of the work of the world. Also, it is a historical as



Attired in outfits from the Historic Costume and Textiles Collection, these mannequins eagerly await their new home in the Geraldine Schottenstein Wing of Campbell Hall.

Swinging along

Barley Foy, a senior from Dayton studying to teach art in her spare time, poses as a model for her students at the Campbell Hall play ground.



The Laverne Fox Photo



TWO COMEDIES—Lesann Gatchell and James Whitenmyer begin their office work day in Strollers Dramatic Society's production of "The Tiger" and "The Typists," in Campbell Hall Auditorium, Nov. 7, 8, 9, at 8:30 p.m.



Personal Statement Gore And Jerry

[Faded text from a personal statement or article, mostly illegible.]

FOCUS

Forum On Contemporary United States
NOTICE—CHANGE OF LOCATION

Joseph Pirincin
Socialist Labor Party
will speak upon
"American Patriotism,
What It Is,
What It Should Be"
**CAMPBELL HALL
AUDITORIUM**

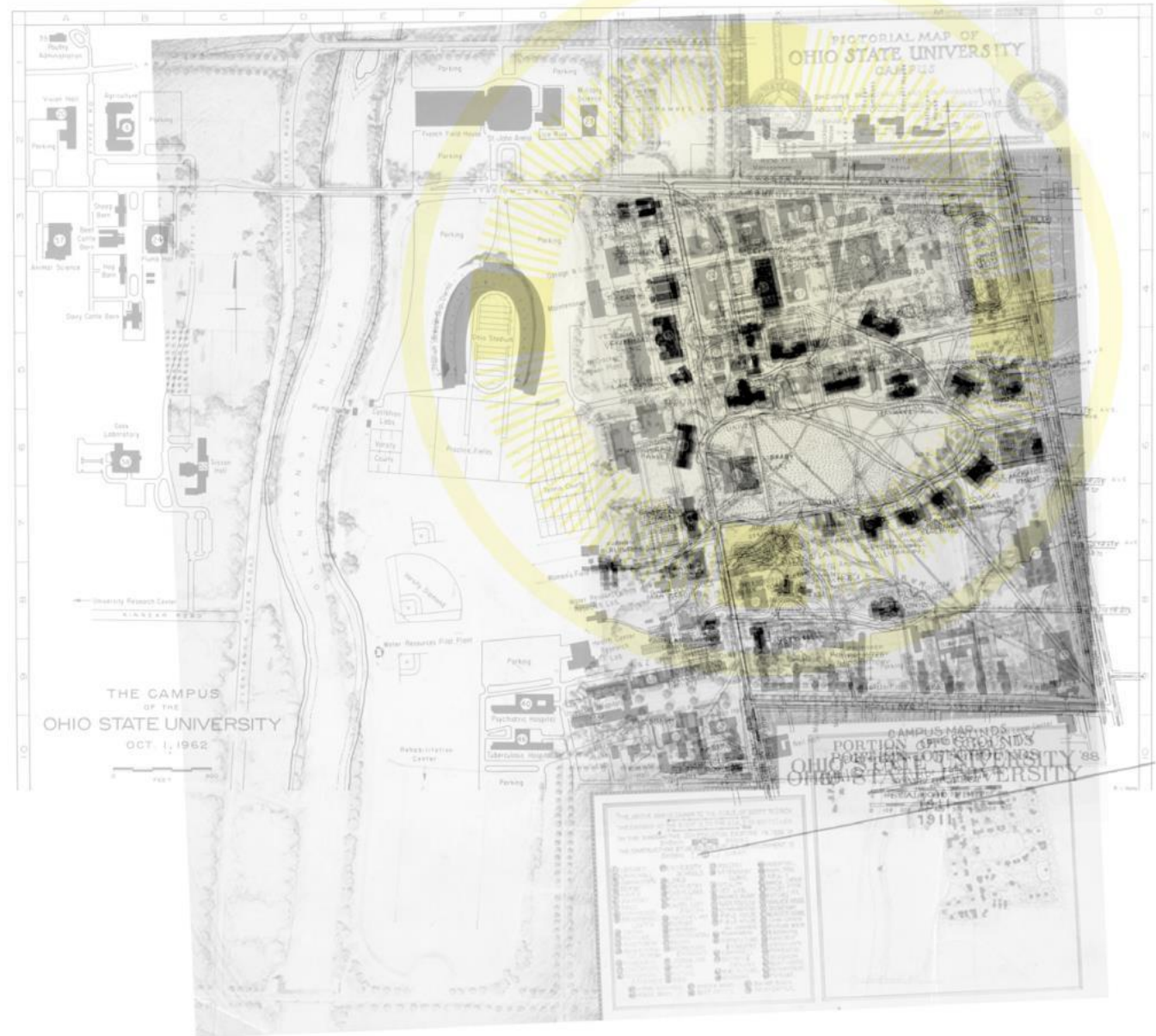
8 p.m.—Wed., Feb. 14
Sponsored by OSU YM-YWCA

CHOKING TIMES

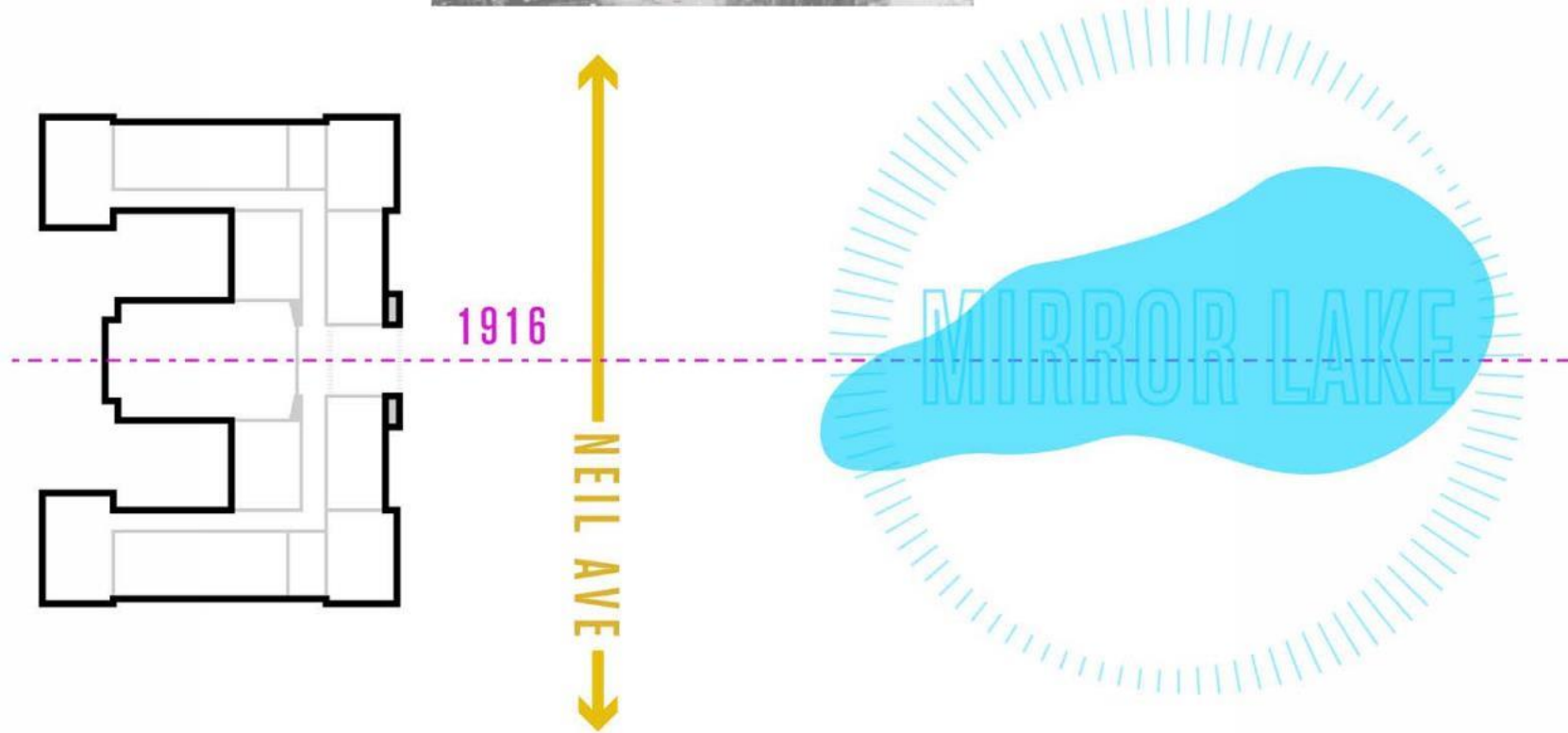
Mount Prosecutes Wilson

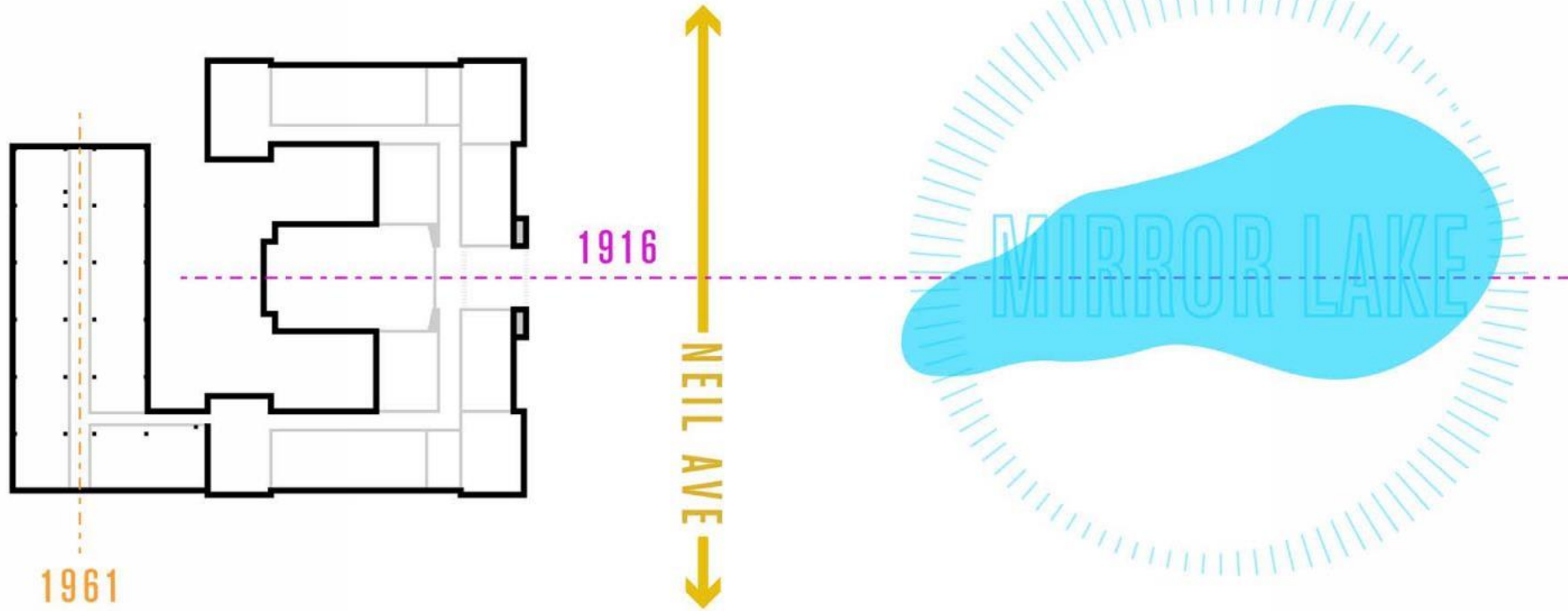
[Faded text from a news article, mostly illegible.]

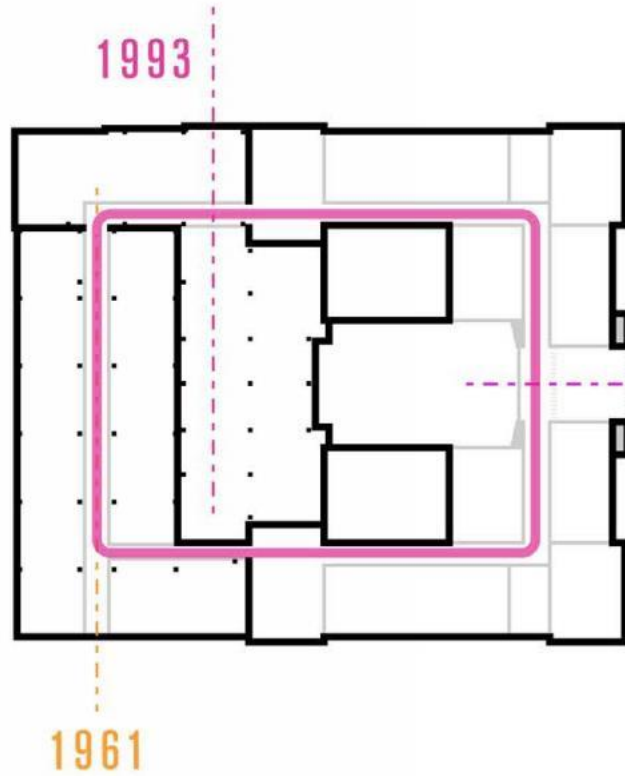
CAMPBELL HALL



HISTORICAL CONTEXT



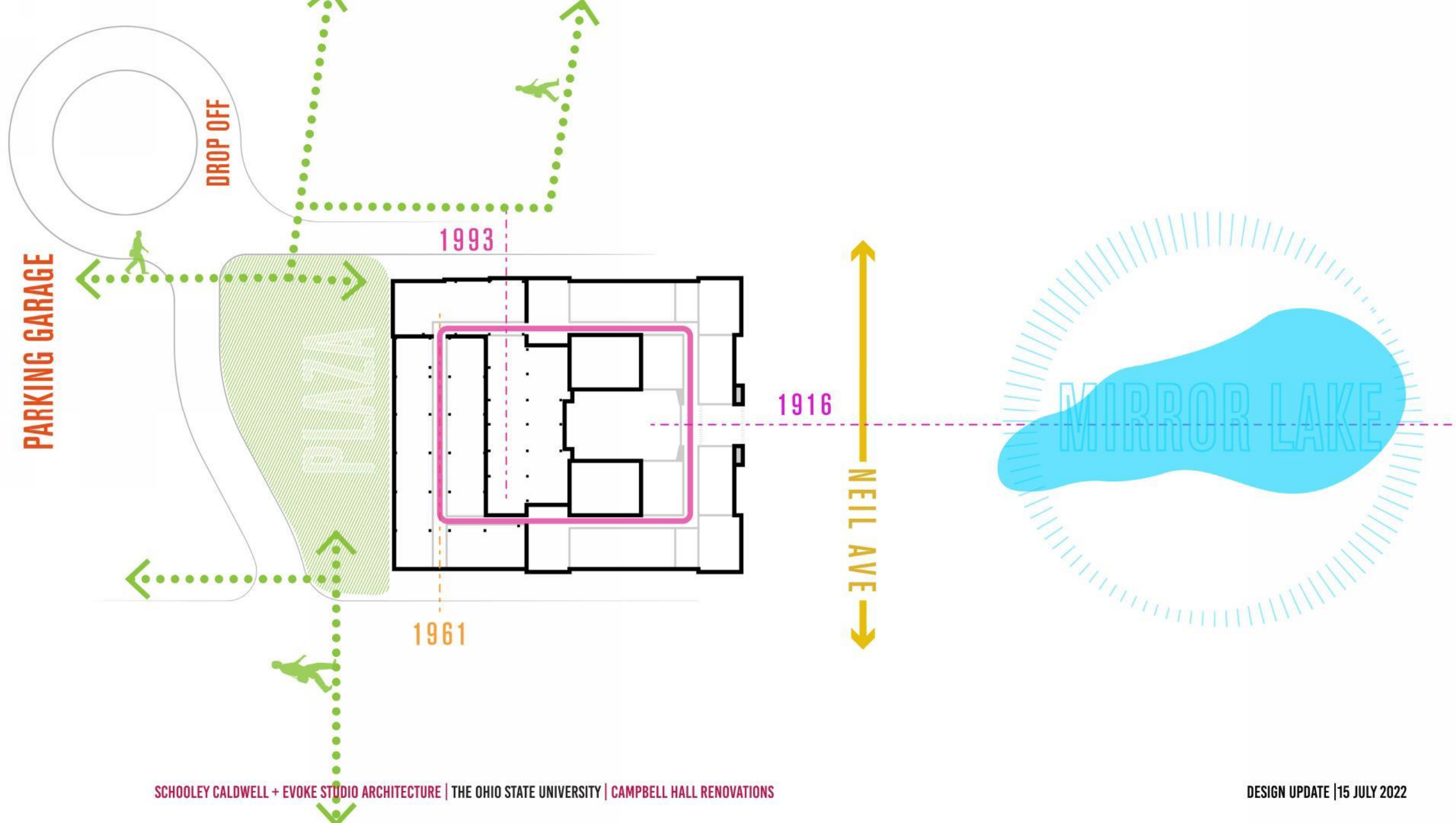




1916

↑
NEIL AVE
↓







Olentangy River

Ohio Stadium

Lincoln Tower Park

PAFS

Thompson Library

Campbell Hall

Mirror Lake

South Oval

RAMSEYER

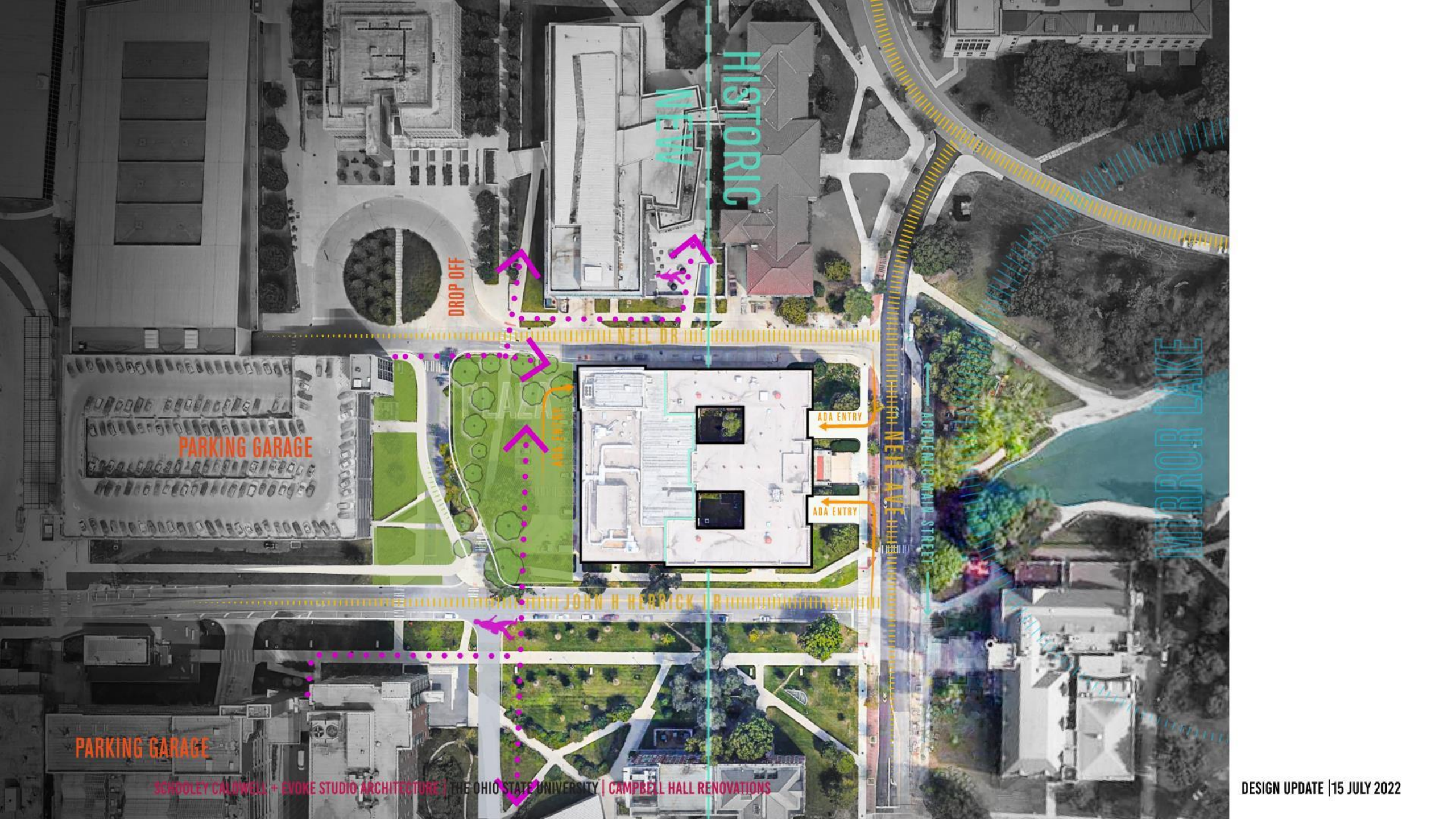
ARPS

The Oval

EHE CONNECTIONS

PROGRAMMING GOALS

- 01** Spaces that better facilitate interdisciplinary collaboration between all EHE members
- 02** Spaces designed with the broader community in mind, as EHE often invites members of the greater Columbus community into their buildings.
- 03** Renovation should have better wayfinding and recognizable entrances and ADA compliant entrances
- 04** The heart of the building should be a community space that can be used for large gatherings but can serve as informal study/meeting space



HISTORIC

NEW

DROP OFF

PARKING GARAGE

ADA ENTRY

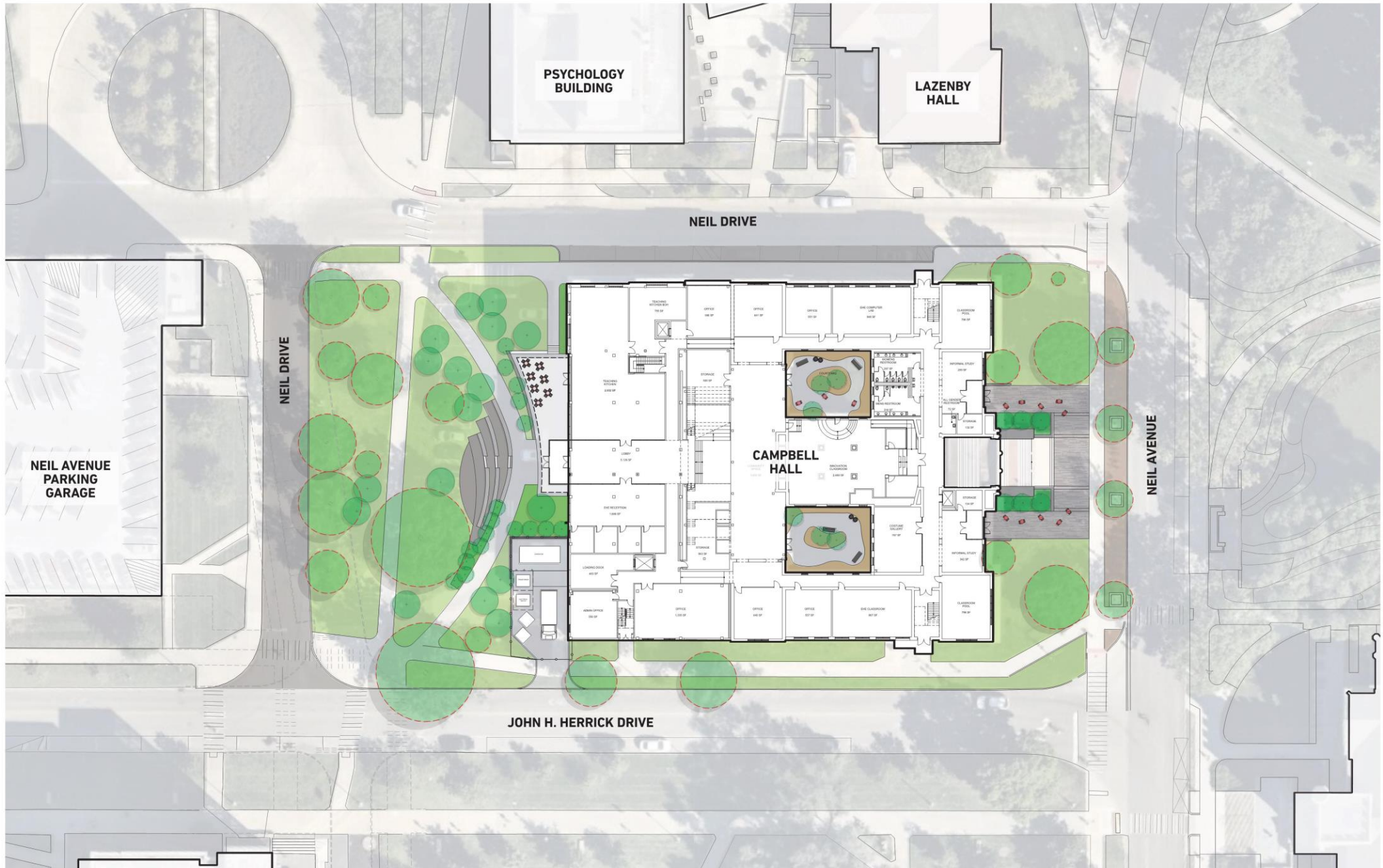
ADA ENTRY

ACPERING MAIN STREET

MIRROR LAKE

JOHN W HERRICK

PARKING GARAGE

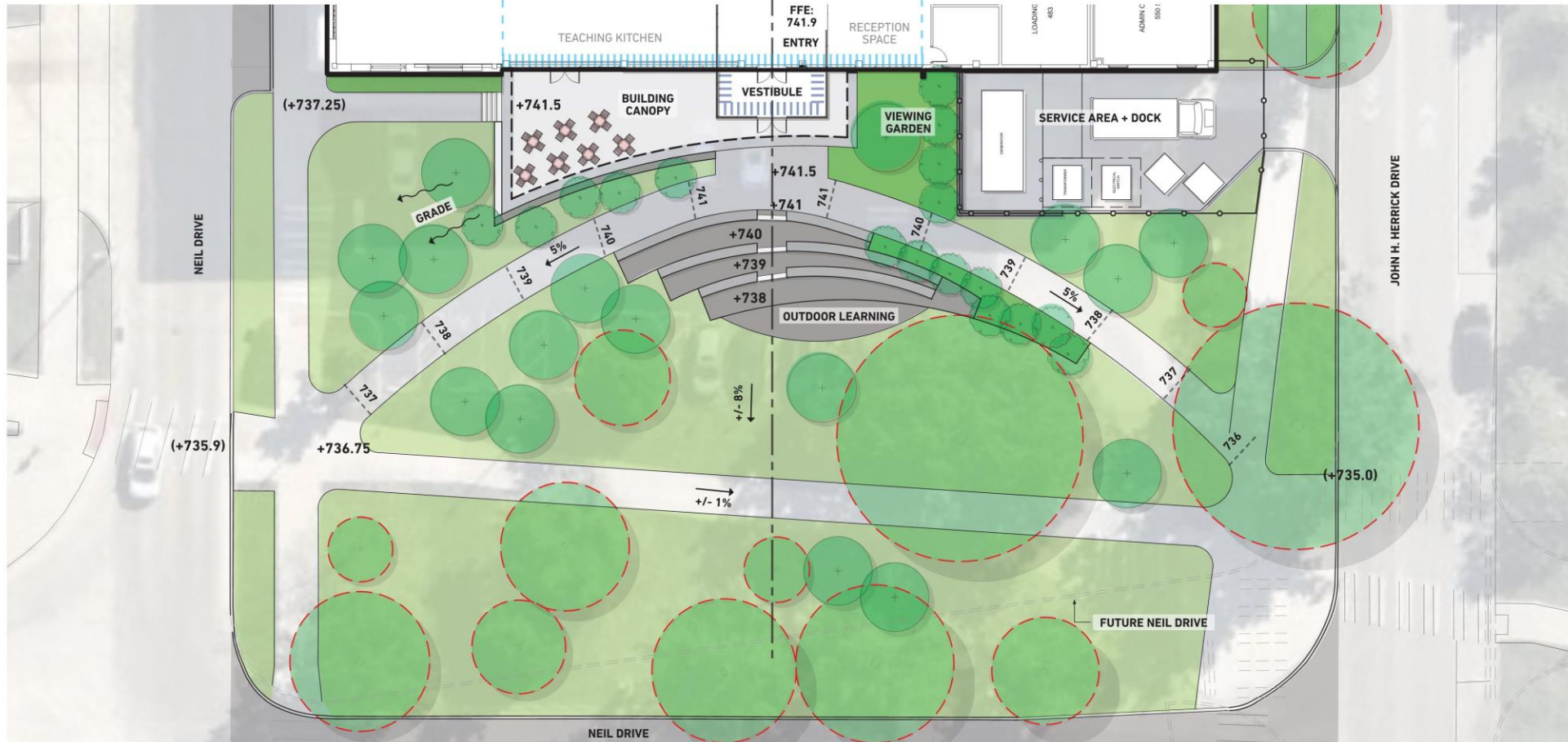


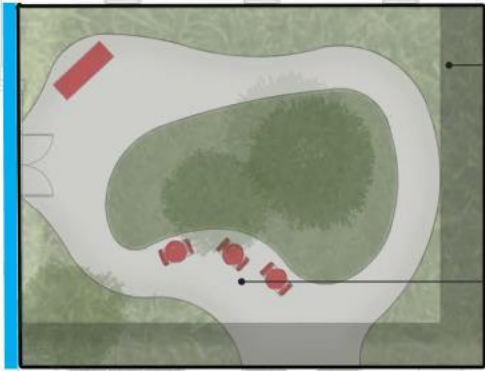


MKSK

SCHOOLEY CALDWELL + EVOKE STUDIO ARCHITECTURE | THE OHIO STATE UNIVERSITY | CAMPBELL HALL RENOVATIONS

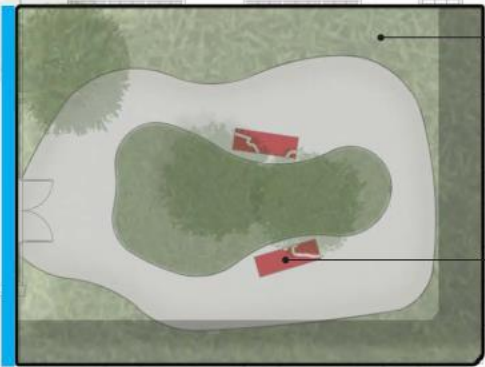
NEIL AVENUE ENTRY





- 1. COURTYARD PLANTING**
- SHADE TOLERANT GROUND COVER
 - 4 SEASON INTEREST
 - ORNAMENTAL TREES

- 2. OUTDOOR SEATING SPACE**
- PAVERS / HARDSCAPE
 - LOOSE TABLES + CHAIRS



- 1. COURTYARD PLANTING**
- SHADE TOLERANT GROUND COVER
 - 4 SEASON INTEREST
 - ORNAMENTAL TREES

- 2. OUTDOOR SEATING SPACE**
- PAVERS / HARDSCAPE
 - BENCH SEATING



PROGRAM

TOTAL GSF: 120,856

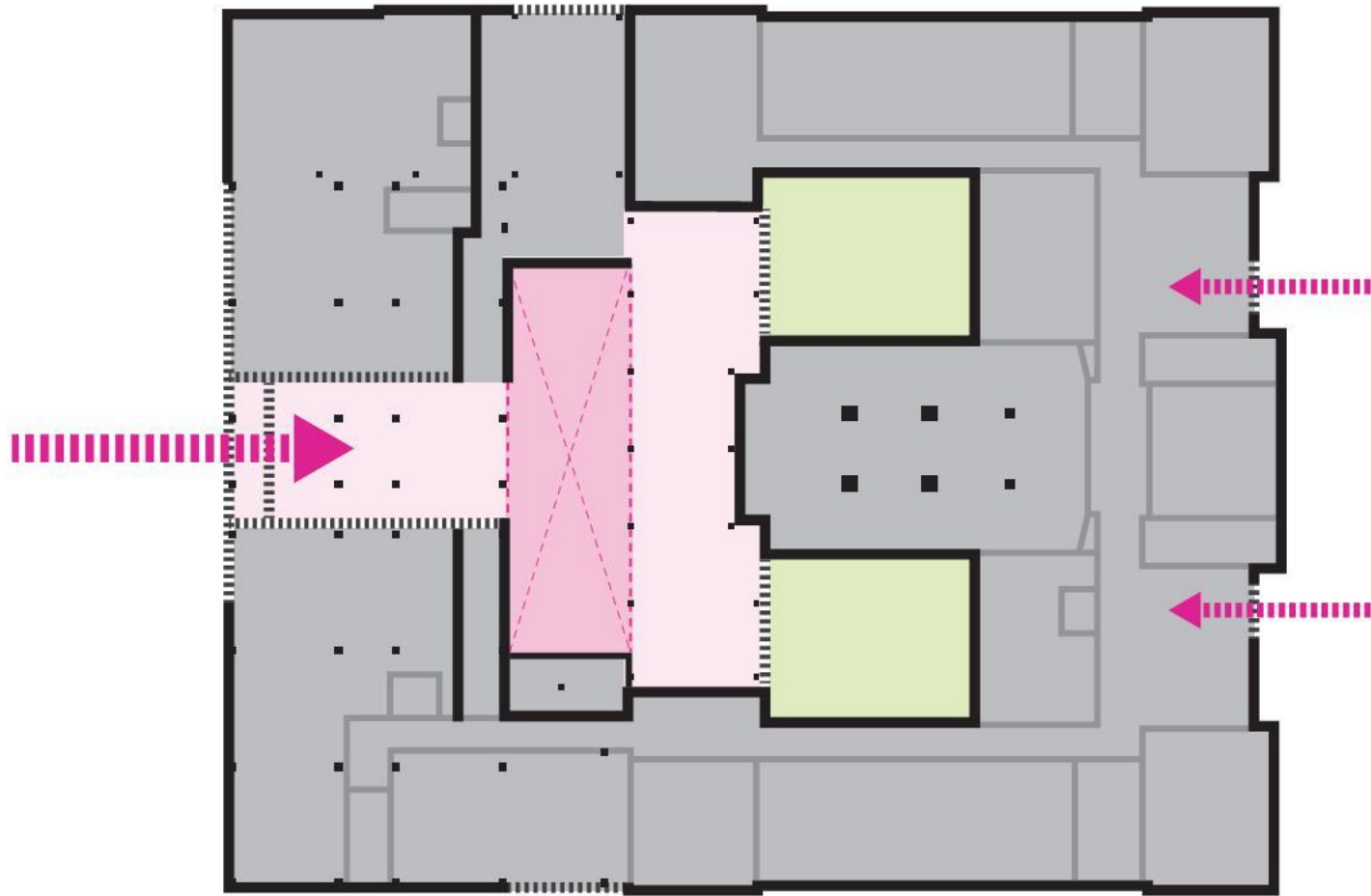
TOTAL NASF: 76,626

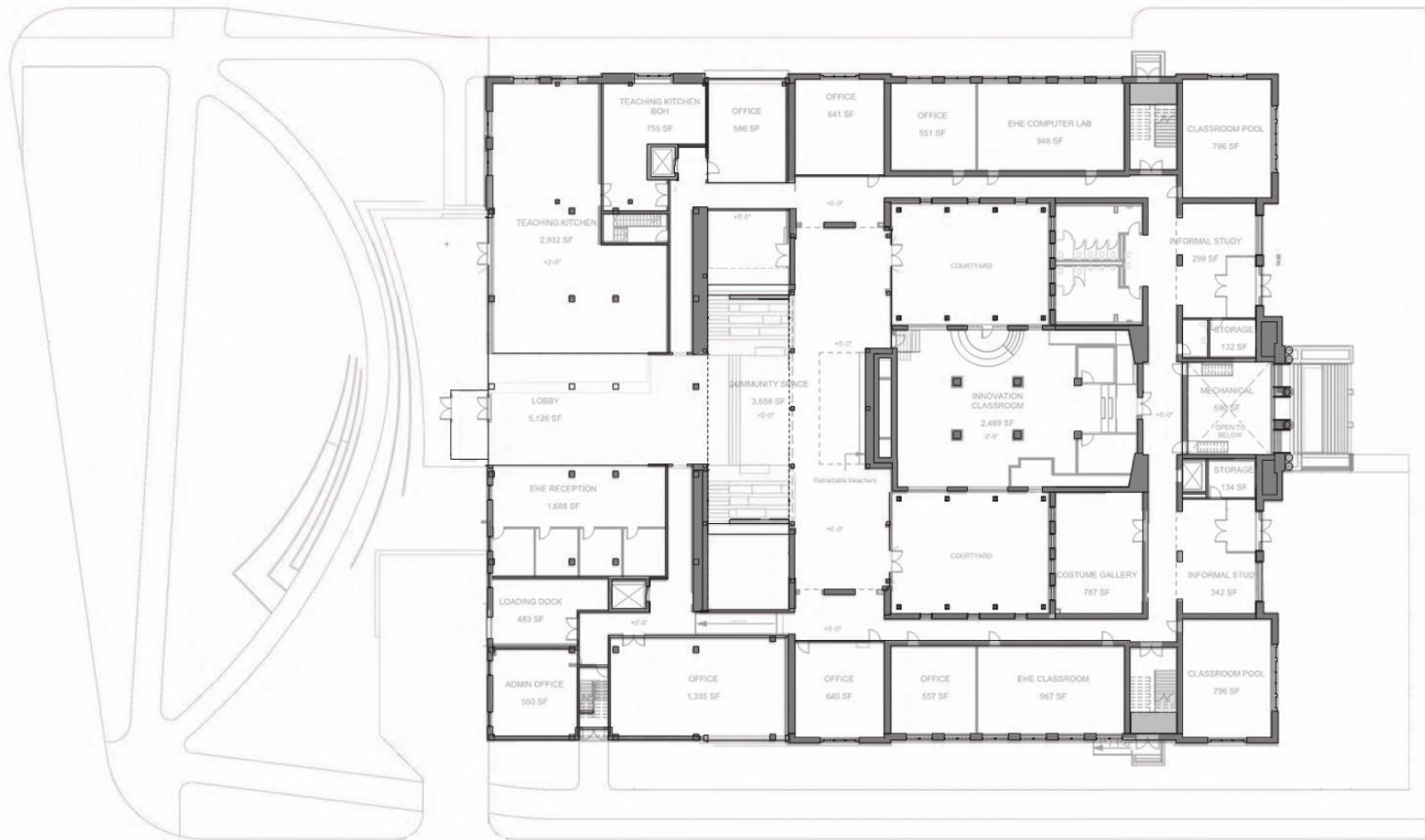
***INCLUDES ENCLOSING THE
1993 ADDITION FIRST FLOOR**

TOTAL GSF: 5,488

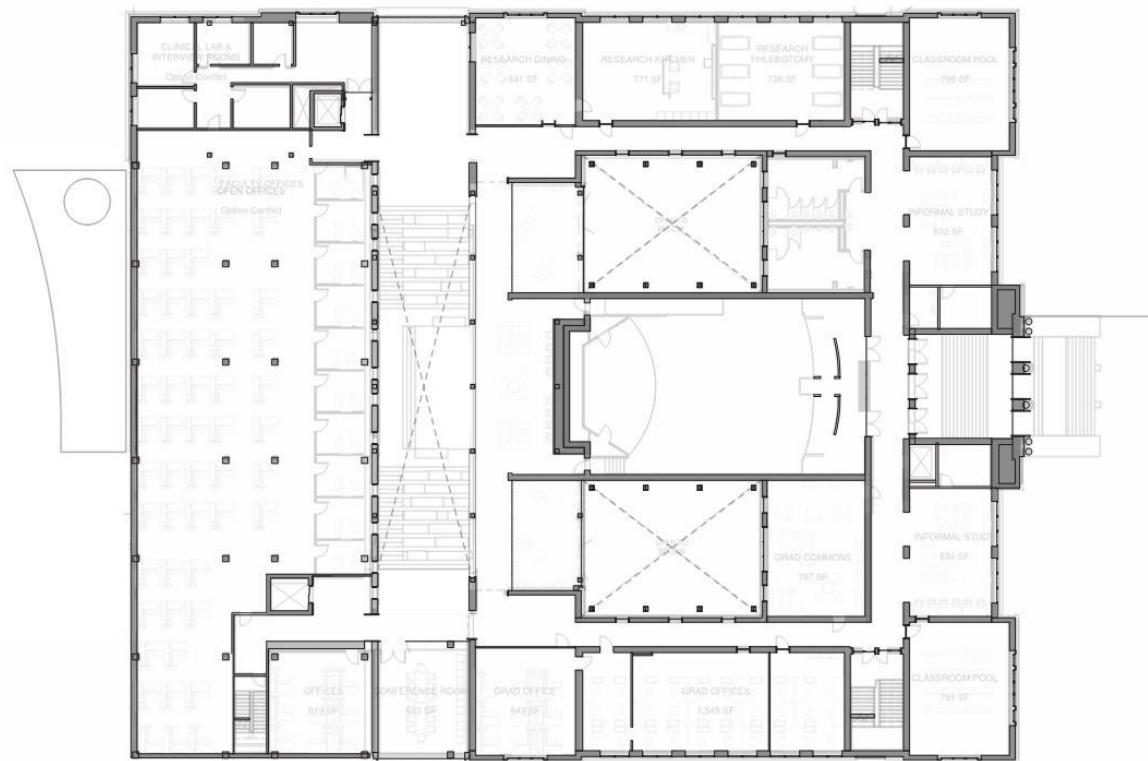
TOTAL NASF: 5,488

OFFICES	31,845 ASF
RESEARCH LABS	14,060 ASF
COSTUME COLLECTION	2,929 ASF
DEPARTMENTAL CLASSROOMS	1,930 ASF
KITCHENS	5,326 ASF
CLASSROOM POOL	10,046 ASF
COMMUNITY SPACE	7,645 ASF
OTHER	2,845 ASF
TOTAL	76,626 ASF

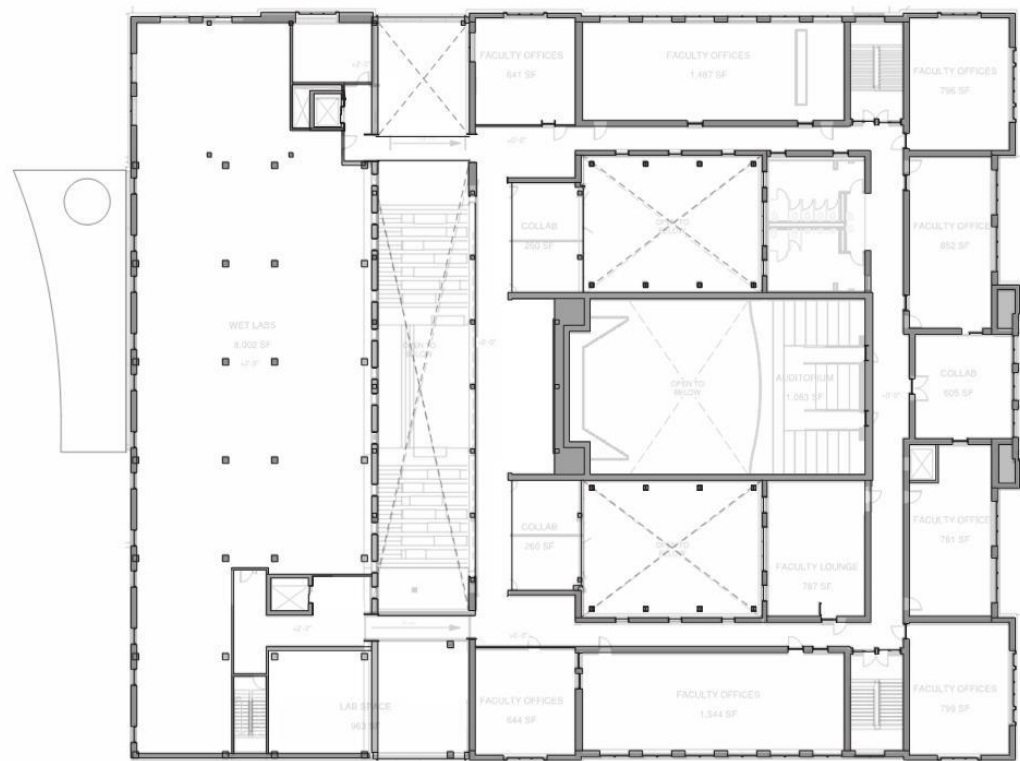




FLOOR 01
 1/32" = 1'



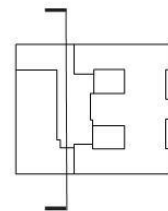
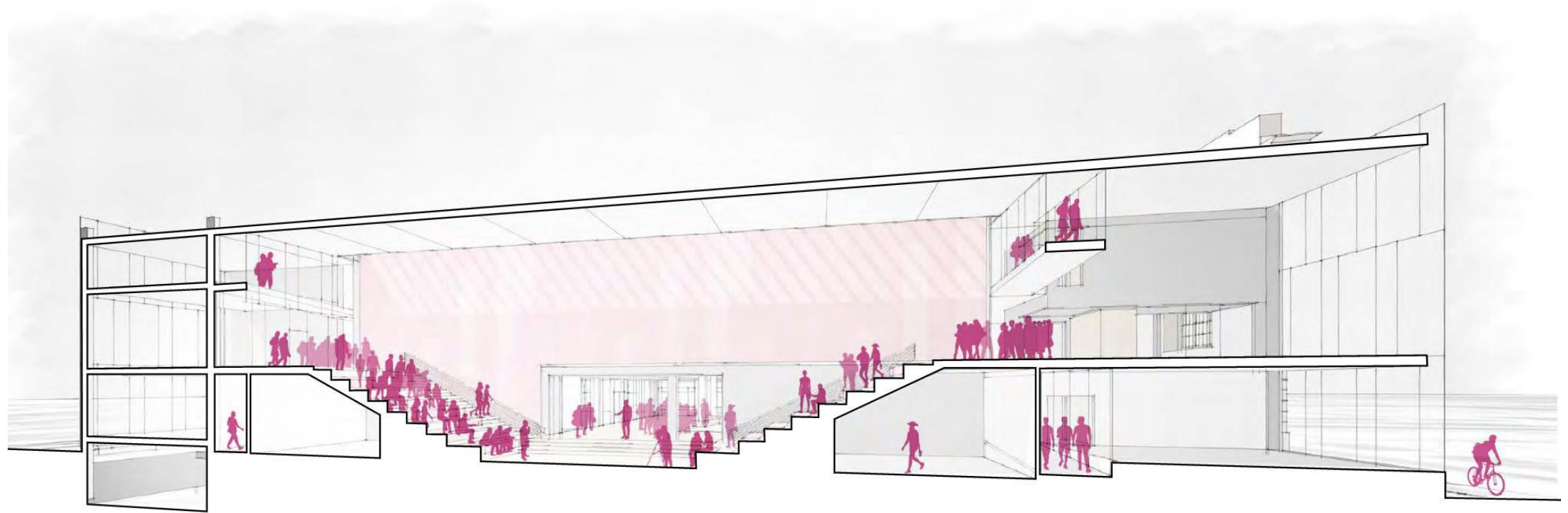
FLOOR 02
1/32" = 1'



FLOOR 03
 1/32" = 1'







PREVIOUS ITERATION







Questions and Answers



THE OHIO STATE UNIVERSITY

COLLEGE OF EDUCATION
AND HUMAN ECOLOGY

CAMPBELL HALL RENOVATION

Renovation Site

go.osu.edu/CRPh

